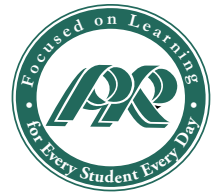




Pine-Richland High School

700 Warrendale Road, Gibsonsia, PA 15044



PINE-RICHLAND HIGH SCHOOL



Phone: 724-625-4444

Fax: 724-625-4640

www.pinerichland.org

District Enrollment – 4,530

High School Enrollment – 1,417

ACT/CEEB Code – 391512

Accreditation: Middle States Association of Colleges and Secondary Schools

Administration

Dr. Brian Miller
Superintendent

Dr. Michael Pasquinelli
*Assistant Superintendent for
Secondary Education & Curriculum*

Dr. Kristen Justus
*Assistant Superintendent for
Elementary Education & Curriculum*

Dr. Frank Hernandez
Principal

Mr. Michael Barlak
Assistant Principal

Dr. Lisa Harding
Assistant Principal

Mrs. Tracy Kuchnicki
Assistant Principal

Counseling Staff

Mr. Anthony Rock, ext. 1657
School Counselor (students A-D)
arock@pinerichland.org

Mrs. Jennifer Bowers, ext. 1652
School Counselor (students E-K)
jbowers@pinerichland.org

Mrs. Toni Filipowski, ext. 1653
School Counselor (students L-R)
tfilipowski@pinerichland.org

Mrs. Leslie Straub, ext. 1655
School Counselor (students S-Z)
lstraub@pinerichland.org

Mrs. Jocelyn Secen, ext. 1674
Transition Coordinator
ohess@substitutes.pinerichland.org

Mrs. Jean Whalen, ext. 1654
Director of College and Career Counseling
jwhalen@pinerichland.org

PRHS Professional Staff

Grades 9-12 108

Master's Degree 49%

Master's Plus 15-45 credits 13%

Doctorate 2%

Our Community

The Pine-Richland School District, located in the north central part of Allegheny County, serves the communities of Pine and Richland townships. Because of its proximity to the City of Pittsburgh, the community has grown tremendously over the last twenty years and continues to prosper. District residents enjoy residential living with easy access to both urban and rural attractions. Pine-Richland is proud of its schools, which serve as the centers of our communities.

Our Mission

Our mission is to focus on learning for every student every day.

Our Vision

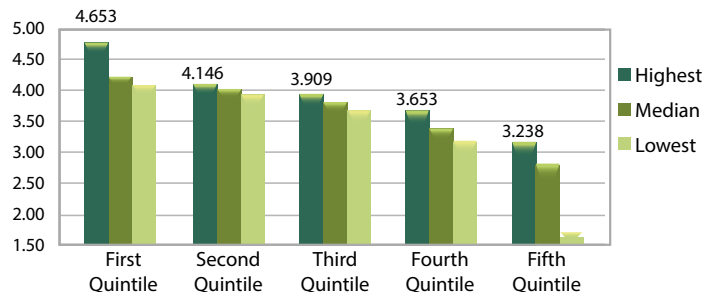
Learning is our primary purpose. Learning occurs inside and outside the classroom. Learning is measured as BOTH achievement AND growth. Learning happens differently for different people so flexibility and variation is needed in the approach. Learning requires effort and persistence. Learning is for all of us and requires the support of everyone (e.g., student, staff, and parents).

*Class of 2022 Post-Secondary Plans – 357 Students

College/University Programs89%	Technical/Career Education 2%
• Matriculated to a 4 year college or university81%	Employed/GAP/Undecided 8%
• Matriculated to a 2 year college.....8%	Military 1%

Class of 2023 Cumulative GPA

Cumulative Quality Point Average (360 students ranked • 6 semesters)



Highest GPA in Class of 2023 4.653

Explanation of Transcript

School Calendar: The PRHS school year consists of four quarters, each nine weeks in duration. Classes meet for either 18 weeks (1 semester) or 36 weeks (2 semesters), 5 days a week, 42 minutes per day.

Course Placement: Placement in each subject is guided by student achievement and teacher recommendation.

Grade Point Average: Student grade point averages are calculated by assigning a weight to each numerical grade on all courses carrying credit. An additional 0.5 is assigned for Honors courses and an additional 1.0 is assigned for Advanced Placement and CHS courses. To calculate GPA, the sum of the weights of each grade is divided by number of credits attempted.

Grading Scale: A = 90-100%, B = 80-89%, C = 70-79%, D = 60-69%, F = <60%, Passing Grade = D.

Class Rank: Reporting of class rank is by request.

***COVID-19 Statement:** PRHS students were able to choose between a 100% virtual or a hybrid learning option for the 2020-2021 school year. There was no difference in course designation or grading for online learning or live instruction. Student transcripts reflect our traditional grading system.

2022 PRHS SAT	SAT Mean Scores	Evidence-Based Reading and Writing				Math
	Pine-Richland	589				591
	Pennsylvania	551				540
	National	529				521
2022 PRHS ACT	ACT Average	English	Math	Reading	Science	Composite
	Pine-Richland	25.8	25.0	26.0	24.9	25.6
	Pennsylvania	24.3	23.7	25.2	24.0	24.4
	National	19.0	19.3	20.4	19.9	19.8
National Merit Scholars	Class of 2022: 9 National Merit Finalists, 14 Letters of Commendation					
College in High School	We collaborate with local colleges to provide the following courses at Pine-Richland High School: Business Calculus, Statistics, Physics and Communications: Argument and Rhetoric.					
Advanced Placement All students enrolled in Advanced Placement courses are required to take the Advanced Placement Exam.	<p>In May 2022, 965 Advanced Placement tests were taken in 23 subject areas. Students earned scores of 5 on 170 tests, 4 on 305 tests and 3 on 263 tests.</p> <p>AP courses offered at PRHS include:</p> <ul style="list-style-type: none"> • American Government & Politics • Art History • Biology • Calculus AB • Calculus BC • Chemistry • Computer Science A • English Language & Composition • English Literature & Composition • Environmental Science • European History • French Language • German Language • Microeconomics • Physics C • Psychology • Spanish Language • Statistics • Studio Art • U.S. History 					
Graduation Credit Requirements for the Class of 2022 24 Credits	Credits	Subject	Credits	Subject		
	4	English	1	Health/Physical Education		
	3	Social Studies	1	Core Flexible Academic (Math, Science, or Social Studies)		
	3	Science	9	Electives		
	3	Mathematics				
Extra-Curricular Activities	The following is a partial list of student activities at PRHS. The marching band currently meets as a co-curricular class earning credit.					
	Audio/Visual - PRTV Best Buddies Foreign Exchange Program	Forensics Future Business Leaders of America Inkwell (Literary Magazine)	Key Club Model United Nations National Honor Society Peer-to-Peer	Student Government Technology Student Association Tri-Rivers Fencing Club		
Student Recognition in the Arts at PRHS	A Pine-Richland High School student was named the grand prize winner in the 17th Congressional District of Pennsylvania 2021 Congressional Art Competition. PRHS students earned top awards in the Scholastic Regional Art Awards program including one American Visions Best of Show nominee, 12 Gold Key awards, 13 Silver Key awards and 48 honorable mention awards for individual works. Three Pine-Richland High School students were selected to Pennsylvania Music Educators Association (PMEA) All-State programs for choir, orchestra and band. Students also represent PRHS at regional choir, orchestra and band programs each year.					
Interscholastic Athletics	Baseball Basketball Cheerleading Crew	Cross-Country Field Hockey Football Golf	Gymnastics Ice Hockey In-Line Hockey Lacrosse	Soccer Softball Swimming/Diving Tennis	Track & Field Volleyball Wrestling	
State & National Recognition	<p><i>US News & World Report</i> ranked PRHS seventh in the Pittsburgh metropolitan area and 26th in the state in its "Top High School" rankings for 2022. In addition, the report ranked PRHS 863 out of 24,000 public schools across the U.S. The <i>Pittsburgh Business Times</i> ranked PRSD eighth in the region in 2021 based on examining 10 years of scores from the Pennsylvania System of School Assessments and Keystone Exams in its "Decade of Excellence" rankings.</p>					