

# Pine-Richland School District

700 Warrendale Road, Gibsonia, PA 15044



## PINE-RICHLAND HIGH SCHOOL

700 Warrendale Road  
Gibsonia, PA 15044  
724.625.4444 Phone  
724.625.4640 Fax  
www.pinerichland.org

District Enrollment – 4,476  
High School Enrollment – 1,438  
ACT/CEEB Code – 391512

Accreditation: Middle States Association of Colleges and Secondary Schools

### Administration

- Dr. Brian Miller  
*Superintendent*
- Dr. Michael Pasquinelli  
*Assistant Superintendent for  
Secondary Education & Curriculum*
- Dr. Kristen Silbaugh  
*Assistant Superintendent for  
Elementary Education & Curriculum*
- Nancy Bowman  
*Principal*
- Robert Puskas  
*Assistant Principal*
- Thomas Salopek  
*Assistant Principal*
- Dr. Stephanie Svilar  
*Assistant Principal*

### Counseling Staff

- Jasmine Holliday, ext. 1657  
*School Counselor (students A-E)*  
jholliday@pinerichland.org
- Jennifer Bowers, ext. 1652  
*School Counselor (students F-K)*  
jbowers@pinerichland.org
- Toni Filipowski, ext. 1653  
*School Counselor (students L-Q)*  
tfilipowski@pinerichland.org
- Leslie Straub, ext. 1655  
*School Counselor (students R-Z)*  
lstraub@pinerichland.org
- Jocelyn Secen, ext. 1674  
*Transition Coordinator*  
jsecen@pinerichland.org
- Jean Whalen, ext. 1654  
*Director of College and Career Counseling*  
jwhalen@pinerichland.org

### PRHS Professional Staff

Grades 9-12.....108  
Master's Degree.....49%  
Master's Plus 15-45 credits.....13%  
Doctorate .....2%



### Our Community

The Pine-Richland School District, located in the north central part of Allegheny County, serves the communities of Pine and Richland townships. Because of its proximity to the City of Pittsburgh, the community has grown tremendously over the last twenty years and continues to prosper. District residents enjoy residential living with easy access to both urban and rural attractions. Pine-Richland is proud of its schools, which serve as the centers of our communities.

### Our Mission

Our mission is to **focus on learning for every student every day.**

### Our Vision

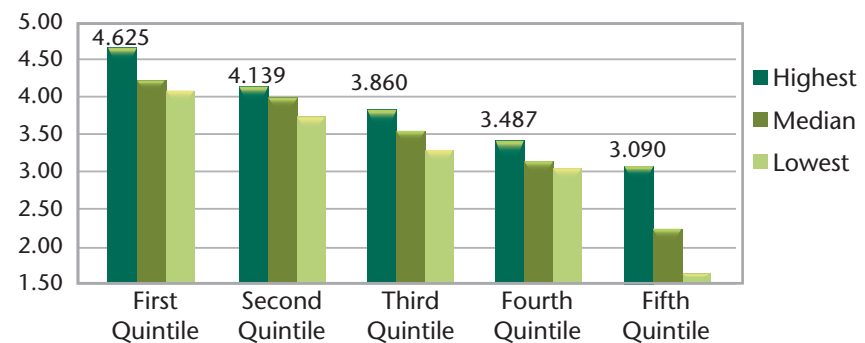
**Learning** is our primary purpose. **Learning** occurs **inside** and **outside** the classroom. **Learning** is measured as BOTH achievement AND growth. **Learning** happens differently for different people so flexibility and variation is needed in the approach. **Learning** requires effort and persistence. **Learning** is for all of us and requires the support of everyone (e.g., student, staff, and parents).

### \*Class of 2020 Post-Secondary Plans – 341 Students

College/University Programs .....88%	Technical/Career Education .....1%
• 80% matriculated to a 4 year college or university	Employed/Undecided/Did Not Complete Survey .....10%
• 8% matriculated to a 2 year college	Military .....1%

### Class of 2021 Cumulative GPA

Cumulative Quality Point Average (381 students ranked • 6 semesters)



Highest GPA in Class of 2021.....4.625

### Explanation of Transcript

**School Calendar:** PRHS's year consists of four quarters, each nine weeks in duration. Classes meet for either 18 weeks (1 semester) or 36 weeks (2 semesters), 5 days a week, 42 minutes per day.

**Course Placement:** Placement in each subject is guided by student achievement and teacher recommendation.

**Grade Point Average:** Student grade point averages are calculated by assigning a weight to each numerical grade on all courses carrying credit. An additional 0.5 is assigned for Honors courses and an additional 1.0 is assigned for Advanced Placement and CHS courses. To calculate GPA, the sum of the weights of each grade is divided by number of credits attempted.

**Grading Scale:** A = 90-100%, B = 80-89%, C = 70-79%, D = 60-69%, F = <60%, Passing Grade = D.

**Class Rank:** Reporting of class rank is by request.

**\*COVID-19 Statement:** Due to the COVID-19 pandemic, the Pine-Richland School District was physically closed from March 14, 2020, through the end of the school year. Online instruction replaced in-person instruction during this time. 2019-2020 4th quarter letter grades were replaced with a Pass/Fail designation. Final grades appear on the high school transcript as a letter grade. Class matriculation data does not reflect 100% participation in the Senior Survey.

<b>2020 PRHS SAT</b>	<b>SAT Mean Scores</b>	<b>Evidence-Based Reading and Writing</b>				<b>Math</b>
	Pine-Richland	589				596
	Pennsylvania	543				534
	National	528				523
<b>2020 PRHS ACT</b>	<b>ACT Average</b>	<b>English</b>	<b>Math</b>	<b>Reading</b>	<b>Science</b>	<b>Composite</b>
	Pine-Richland	25.5	25.2	26.3	25.2	25.7
	Pennsylvania	23.4	23.2	24.3	23.4	23.7
	National	19.9	20.2	21.2	20.6	20.6
<b>National Merit Scholars</b>	Class of 2020: 4 National Merit Finalists, 7 Letters of Commendation					
<b>College in High School</b>	We collaborate with local colleges to provide the following courses at Pine-Richland High School: Business Calculus, Statistics, Physics, Communications: Argument and Rhetoric, and Advanced Computer Science.					
<b>Advanced Placement</b> All students enrolled in Advanced Placement courses are required to take the Advanced Placement Exam.	In May 2020, 951 Advanced Placement tests were taken in 25 subject areas. Students earned scores of 5 on 227 tests, 4 on 273 tests and 3 on 252 tests.					
	AP courses offered at PRHS include: <ul style="list-style-type: none"> <li>• American Government &amp; Politics</li> <li>• Art History</li> <li>• Biology</li> <li>• Calculus AB</li> <li>• Calculus BC</li> <li>• Chemistry</li> <li>• Computer Science A</li> <li>• English Language &amp; Composition</li> <li>• English Literature &amp; Composition</li> <li>• Environmental Science</li> <li>• European History</li> <li>• French Language</li> <li>• German Language</li> <li>• Microeconomics</li> <li>• Physics C</li> <li>• Psychology</li> <li>• Spanish Language</li> <li>• Statistics</li> <li>• Studio Art</li> <li>• U.S. History</li> </ul>					
<b>Graduation Credit Requirements for the Class of 2020</b> <b>24 Credits</b>	<b>Credits</b>	<b>Subject</b>	<b>Credits</b>	<b>Subject</b>		
	4	English	1	Health/Physical Education		
	3	Social Studies	1	Core Flexible Academic (Math, Science, or Social Studies)		
	3	Science	9	Electives		
	3	Mathematics				
<b>Extra-Curricular Activities</b>	The following is a partial list of student activities at PRHS. The Marching Band currently meets as a co-curricular class earning credit.					
	Audio/Visual - PRTV Best Buddies Foreign Exchange Program	Forensics Future Business Leaders of America Inkwell (Literary Magazine)	Key Club Model United Nations National Honor Society Peer-to-Peer	Student Government Technology Student Association Tri-Rivers Fencing Club		
<b>Student Recognition in the Arts at PRHS</b>	Several PRHS students earned Scholastic Regional Art awards. Of the 27 awards earned by 17 PRHS students, six were Gold Key awards. Two Pine-Richland High School students were selected for the Pennsylvania Music Educators Association All-State Choir with many other students representing PRHS at regional choral, orchestra, band programs.					
<b>Interscholastic Athletics</b>	Baseball	Cross-Country	Gymnastics	Soccer	Track & Field	
	Basketball	Field Hockey	Ice Hockey	Softball	Volleyball	
	Cheerleading	Football	In-Line Hockey	Swimming/Diving	Wrestling	
	Crew	Golf	Lacrosse	Tennis		
<b>State &amp; National Recognition</b>	US News & World Report ranked PRHS eight in Allegheny County and 25th in the state in its "Top High School" rankings for 2020. In addition, the report ranks PRHS 860 out of 17,245 public schools across the U.S. <i>The Pittsburgh Business Times</i> ranked PRHS eighth out of 105 districts in the region in its 2020 list. Five PRHS students earned awards at the Pennsylvania Future Business Leaders of America State Competition. The PRHS Air Force Junior ROTC received the 2019-2020 the AF-JROTC Distinguished Unit Award.					