



Richland Elementary School

**Welcome Parents of Incoming
Kindergarten Students**

Dr. Gene Nicastro, Principal





Richland Elementary School

Click [HERE](#) for a digital book to read with your child. It is a great way for your child to become familiar with Richland Elementary School!

**HIGH SCHOOL
GRADES 9-12**



Eden Hall Grades 4-6



**MIDDLES SCHOOL
GRADES 7-8**



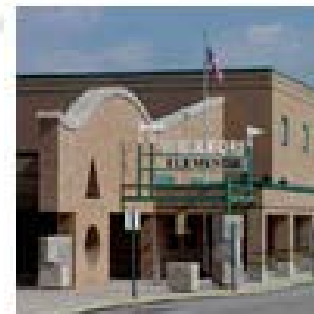
RICHLAND K-3



HANCE K-3



WEXFORD K-3



PR Earns Top Rankings by National & Regional Publications



US News & World Report *Top High School Rankings*

US News & World Report named Pine-Richland High School the top high school in the county and seventh in the state in the publications "Top High School" rankings. The report also ranked Pine-Richland #501 in the US. The publication takes into account test scores.



The Washington Post *Most Challenging High School*

The Washington Post also released its Most Challenging High Schools ranking and named Pine-Richland High School second Most Challenging High School in the county, #12 in the state and #1,005 in the nation. The publication takes into account Advanced Placement Testing results and participation levels, along with graduation rates.



Pittsburgh Business Times *Best School Districts in State & Region*

The Pittsburgh Business Times ranked Pine-Richland School District eighth in the region and #29 in the state. These annual ranking systems each have their own formulas. The Pittsburgh Business Times factors in two years worth of PSSA scores with the latest year holding most weight.

Richland Elementary School

- A K-3 Public School serving students in the Gibsonia area
- Home to approximately 450-500 students in kindergarten through third grade
- Richland is the former PRSD High School, which is why we have many of our amenities (track/field, auditorium, tennis courts, softball/baseball fields, etc.)
- A Title I School recognized by the Pennsylvania Department of Education as a Distinguished Title I School for 5 Consecutive Years
- Class size typically ranges from approximately 18-25 students
- Typical number of homeroom teachers (K-3) is approximately 21-23
 - usually 5-6 sections per grade level
- Approximately 35-40 additional staff members, including the office staff, nurses, guidance counselor, special education teachers, reading specialists, intervention specialist, special area teachers, speech pathologist, occupational therapist, physical therapist, para-educators, cafeteria staff, and custodial staff



Mission - Why We Exist

The mission of the Pine-Richland School District is to focus on learning for every student every day.

Vision - Our Ideal Future

The vision of the Pine-Richland School District is a picture developed by a student that captures the mission and provides a vivid reminder of the challenge and opportunity of our schools.

Shared Values - The values that guide our actions are based on the PRIDE acronym (emphasis on PR):

P - Personal Growth

R - Resiliency

I - Innovation

D - Diverse Opportunities

E - Engagement



Effort
and
Persistence

PARENTS

STUDENTS

STAFF

COMMUNITY

FOCUSED
ON
LEARNING

Achieve
& Grow

4
3
2
1

Inside
&
Outside
of the Classroom

Learning is
Different for
Different People

Structure of Kindercamp

- **Photos of incoming kindergarten students**
- **Bus talk and ride**
- **Nametags with colored dots to identify groups**
 - **Six Groups**
 - **Each station is approximately 15 minutes**
- **Presentation for parents**
 - **Principal, school nurse, PTO, etc.**
- **Tour for parents**
- **Reunification in the auditorium**

Kindergarten Transportation

○ A.M. Kindergarten

- Transportation to School
 - Bus transportation is provided
 - You can choose to have your child be a car rider
- Transportation from School
 - Bus transportation is not provided

○ P.M. Kindergarten

- Transportation to School
 - Bus transportation is not provided
- Transportation from School
 - Bus transportation is provided
 - You can choose to have your child be a car rider

Kindergarten Transportation (cont.)

○ P.M. Kindergarten

- Inform your child's teacher how your child will typically get home (bus or car rider)
- If there is a change on a particular day, please send a note in your child's folder AND e-mail the teacher AND secretaries
 - This is only needed if it is a change in your child's regular transportation
- If your child is going to go home with a friend on a different bus, then a note is needed from both parents (some buses are at full capacity and bus passes may not be available)

Kindergarten Times

○ A.M. Kindergarten

- Arrival = 9:00 – 9:15 (by bus or a car rider)
- Dismissal = 11:50-12:00
 - Please do not arrive prior to 11:40 a.m. (fire lane)
 - Display child's name from rearview mirror

○ P.M. Kindergarten

- Arrival = 12:50 – 1:00
 - Please do not arrive prior to 12:40 (fire lane)
- Dismissal (by bus or a car rider)
 - Car rider door opens at 3:40 to sign-in
 - Door #20 - side of the building
 - We begin calling car riders at 3:45
 - Bus dismissal ends by 4:10

- **General Entrance to the Building**
 - **A.M. pick-up and P.M. drop-off**
 - **Also parent parking after 9:15 and before 3:25**
 - **late, early dismissal, etc.**



A.M. pick-up and P.M. drop-off

**Use both lanes until merge point
Alternate and take your turn**



A.M. pick-up and P.M. drop-off
(Children enter and exit the vehicle from the RIGHT side)



A.M. pick-up and P.M. drop-off

- If needed, use the side parking lot to buckle seatbelts**
- If possible, have children practice unbuckling themselves**



A.M. Car Rider drop-off and Stepping Stones Childcare



**Parent parking after 9:15 and before 3:25
(use the side lot for other times)**



Entering the School (bringing child late, early dismissal, volunteering, etc.)



Procedures to Remember

- **Wellness Policy**

- **You can pack a snack for your own child, but no food/drink can be brought to school for the class (birthdays, holidays, etc.)**

- **Birthday Parties Outside of School**

- **Invitations can only be distributed in school if every child in the class is invited**

- **Communication from the School/District (paperless)**

- **Register e-mail addresses through the District's website to receive information from the school**

Communication

- **School/District Communication**
 - **The Flash**
 - **Go to the Pine-Richland homepage (www.pinerichland.org)**
 - **Under *Select a Site* choose *Richland***
 - **Under *Site Shortcuts* choose *E-News Flash Info.***
 - **Enter an e-mail address**
 - **You may register multiple e-mail addresses**



**Pine-Richland
School District**

Focused on Learning for Every Student Every Day

[Sign In](#) | [Register](#)[TRANSLATE](#) ▼[SELECT A SITE](#) ^[District Home](#)[Pine-Richland High School](#)[Pine-Richland Middle School](#)[Eden Hall Upper Elementary](#)[Hance Elementary School](#)[Richland Elementary School](#)[Wexford Elementary School](#)[Pine-Richland Athletics](#)

Spotlight on Learning

Hundreds of pieces of artwork on display at Pine-Richland High School.

[LEARN MORE](#)[BUS
INFO](#)[EVENT
CALENDAR](#)[MEALS](#)[NEWS
& BIDS](#)[STAFF
DIRECTORY](#)

District Homepage – www.pinerichland.org



Even seven and eight-year-olds can be heroes! Richland Elementary School second-graders volunteered to participate in the Jared Box Project for Children's Hospital of Pittsburgh.

[VIEW ALL](#)

Site Shortcuts

[Breakfast & Lunch Menus](#)[E-News Flash Info](#)[Free & Reduced Meal Applications](#)[Home Access Center Log-In](#)[Parent Handbook](#)[PR Happenings](#)[PR News Now](#)[PTO](#)[Request for Special Absence Form](#)

Richland Elementary School



3811 Bakerstown Rd., Gibsonia, PA 15044

Phone: 724-443-1558 | Fax: 724-443-2180

Stay Connected



**Scroll down on the Richland Elementary homepage
to *Site Shortcuts* and click on *E-News Flash Info***



**Pine-Richland
School District**

Focused on Learning for Every Student Every Day

[Sign In](#) | [Register](#)

[TRANSLATE](#) ▼

[SELECT A SITE](#) ▼

[Home](#) > [At Your Service](#) > [Communications](#) [eNews Overview & Registration](#)

Communications

Communications

News & Information

eNews Overview &
Registration ^

> eNews Publication Descriptions
& Process

> Happenings - PR Community
News

> Booster & Student Activity
News

> Community Events Calendar
(Items listed in Orange)

> Camp Listings

Report Good News

Publications

Stay Informed! E-news Information & Registration

Pine-Richland School District's primary communication sources are the school's website and e-mailed newsletters. Registered families from the district will receive eNews based on the grades and buildings in which their children attend, district-wide updates, and our community newsletter.

[Sign Up Now](#)

For Email Newsletters you can trust

The system used for this communication is a self-registration database and is not tied to the official school record, Home Access. If you are not receiving these newsletters or wish to add an email address, use the link below. If your email address is changing or you need to update your registration in any way, please use the box below or email prnewsletters@pinerichland.org.

You may enter multiple e-mail addresses

Communication

○ Report Cards

- Go to the Pine-Richland homepage (www.pinerichland.org)
- Under *At Your Service* choose *Parents*
- Choose *Home Access Center e-School Plus*
- *Click Here* to login or register
 - If you are already registered for another child in the District, you do not need to register again
- Login or click *Here* to register
- Register with parent's name, not your child's name
- Register with an e-mail address (family/parent)

Pine-Richland School District

Focused on Learning



[Home](#)
[About Us](#)
[At Your Service](#)
[Athletics & Activities](#)
[Academics](#)
[School Board](#)
[Calendar](#)



- [Booster & Parent Organizations](#)
- [Budget/Finances](#)
- [Bus Transportation](#)

C

- [Calendar](#)
- [Communications](#)
- [Community & Volunteers](#)

D

- [Delays & Cancellation Alerts](#)
- [Discipline Code](#)

E

- [Emergency Operations Plan](#)
- [Employment Opportunities](#)
- [E-Newsletters](#)

- [Handbooks](#)
- [Health Services](#)
- [Home Access](#)

K

- [Keystone Exams](#)

M

- [Mascot & Logo Guidelines](#)
- [Meals & Menus](#)

N

- [News & Information](#)

P

- [Parents](#)
- [Pest Management](#)

- [Report Cards](#)
- [Right to Know](#)

S

- [School Readiness and Transitions](#)
- [School Safety](#)
- [Senior Citizens](#)
- [Site Map](#)
- [Special Education](#)
- [Student Services](#)

T

- [Technology](#)

V

- [Video Vault](#)
- [Visitor Procedures](#)

[Discipline Code](#)[Drug & Alcohol Prevention](#)[Educational Resources](#)[Family Education Rights &
Privacy Act](#)[Handbooks](#)[Home Access Center
\(eSchoolPlus\)](#)[PSSA & PVAAS Information](#)[Student Assistance Program](#)[Transition Resources](#)[School Performance Profile >](#)[Home Access](#)[Dealing with Abuse](#)

Electronic Report Cards

Overview

Electronic Report Cards

Parents/Guardians Can View Grades, Schedule & Bus Information for Students

Pine-Richland School District is pleased to announce that parents/guardians of students can access their children's bus information, classroom placements and/or courses/schedules. **New information for 2018-2019** will be available at **4:30 p.m. on August 14, 2018.**

During the school year, parents can access their children's grades through the Home Access Center at <http://pinhomeaccess.spihost.com> at 4:30 p.m. for end-of-quarter grades. At the secondary level, students in grades seven through 12 can log onto the site.



Accessing the System



To access the system, [click here](#) or type <http://pinhomeaccess.spihost.com> in your browser. Parents/guardians must self-register by reading the instructions to the right of the screen. Only one login is needed for a parent/guardian to have access to all of their children's information. Most Parents/guardians should have already self-registered. *Although a time is indicated for bus pick up and drop off, please have your child/children arrive 10 minutes prior to the scheduled time and leave a 5-10 minute window in the afternoon as well.*

Troubleshooting

If you are experiencing difficulties accessing the link:

- Be sure to close all internet browser windows before logging on to the site.
- Open only the Home Access Center site in your browser.
- Delete saved log-in information, saved passwords, shortcuts, temporary internet files, cookies and browsing history.
- Use this link <http://pinhomeaccess.spihost.com> to create a new shortcut and to access your child's grades.

Parents/guardians should have already self-registered. However, if you did not, click on the above link to self-register. Only one log-in is needed for a parent/guardian to have access to all of his/her children's information.

While self-registering, you might receive an error message if your contact information does not match exactly with the district's information on file.



Please contact Gina Hoffman in the front office if you experience any problems while accessing your child's information.



Login

Please note: all user passwords are Case Sensitive

This Home Access Center website is used by multiple districts to allow parents to view their students' schoolwork and other information.

If the website cannot determine your school district, a district selection box will display above the login box. If you see the district selection box, please be sure to select the correct **district** before logging in.

Please contact your school district if you experience any problems while accessing your student's information.

Please enter your account information for Home Access Center.

User Name:

Password:

[Forgot My Username or Password](#)

[Click Here to Register for HAC](#)

Login

Questions or Troubleshooting?

- **Contact the secretary (Gina Hoffman) at 724-443-1558**
 - **vhoffman@pinerichland.org**
- **Please register for the E-News Flash as soon as possible**
- **Please do not wait until the day report cards are released to create a Home Access account**
- **For questions during the school year, first check with your child's teacher. E-mail is the most efficient way to communicate.**

Additional Reminders

- **Please communicate with your child's teacher and the secretaries in advance (with a note) for things such as early dismissals or a change in your child's transportation.**
 - **Gina Hoffman – vhoffman@pinerichland.org**
 - **Nora McChesney – nmcchesney@pinerichland.org**
- **Please submit a note if your child is late or absent. If applicable, please provide a doctor's excuse.**
 - **We can approve 10 student absences with excuses submitted by a parent**
- **Visitors should have an appointment and receive a visitor badge. Please enter and exit the building through the vestibule in the office.**

Preparing Children for Kindergarten

- Read to your child
- Personal data (orally)
- Print name (first and last)
- Body image (draw a person / identify body parts)
- Color recognition
- Counting
- Recite the alphabet
- Letter recognition (lower and upper case)
- Numeral comprehension / number readiness
- Rhyming
- Social interaction with other children this summer (taking turns, sharing, raising their hand, first/then, preferred/non-preferred, etc.)

Preparing Parents for Kindergarten

- Kindergarten is a ½ day program – **begin making arrangements for both a.m. and p.m. scenarios**
 - Letters typically mailed last week of June
 - Students' needs (academic/social/behavioral), balancing classes (quantity, male/female, special needs, etc.)
 - Rationale/Requests are typically received from more parents than the number of available spots – ex. work schedule, naps, car-pooling, etc.

Contact Information

- **Richland Elementary School**
3811 Bakerstown Road
Gibsonia, PA 15044
724-443-1558
- **12-month secretary**
Gina Hoffman – vhoffman@pinerichland.org
- **10-month secretary**
Nora McChesney – nmcchesney@pinerichland.org
- **Transportation**
 - **Student Transportation of America: 724-502-4614**
 - **PRSD Transportation Coordinator – Ms. Kim Charney**
 - **724-625-7773, ext. 6200 or click [HERE](#) to submit on-line forms**



Richland Elementary Health Office

Mrs. Cassandro, RN, CSN

Examinations

- The following examinations are mandated by the state of Pennsylvania and may be performed by your child's personal physician or dentist:
 - Physical examinations – K, 6th and 11th
 - Dental examinations – K, 3rd and 7th
- School examinations

Immunizations

- Documentation
- New Regulations

State Mandated Health Screenings

- Each student is weighed and measured every year. In addition, a Body Mass Index (BMI) for age percentile is calculated on all students.
- Each student has a near and far vision test every year.
- Each student has a hearing test in kindergarten through third grade and in seventh and eleventh grades.
- Mass Screening, Referrals, and Communication.

Medication Policy



- Medication must be accompanied by a medication permission form which includes a physician and parent signature.
- Medications are not available in school unless provided by parents in the original container.
- This includes over the counter medication.
- Forms are available from the nurse or district website.

Sick Guidelines

Please consider the following guidelines when making the decision to send your child to school:

- Fever of 100 degrees or higher: children should be fever free for 24 hours without fever – reducing medication.
- Uncontrollable coughing.
- Vomiting/Diarrhea: children should be free of symptoms for 24 hours before returning to school.
- Inability to sleep most of the night because they don't feel well.

Infectious Diseases:

- Follow the ACHD Guidelines.

Contact Information



Health Office Hours
Monday through Friday
8:15 am to 4:00 pm
724-443-1558, Ext. 4805

bcassandro@pinerichland.org

PR Website
“At Your Service”
“Health Services”



PRide