

PINE-RICHLAND



Parent Meeting

Hance Elementary School

@ Eden Hall

PINE-RICHLAND



Parent Meeting

Agenda

- Introductions (Faces and Spaces)
- Arrival and Dismissal Procedures
- Grade Level and Classroom Set-up
- Educational Programming
- Hance Building Update

Kindergarten



Staff: Mrs. Hoffman and Mrs. Kuremsky

First Grade



Staff: Mrs. Heilman, Mrs. Magill, Mrs. Pritchard & Mrs. Jackovac

Second Grade



Staff: Ms. Zirpoli (Student Teacher),
Mrs. Fetterman, Mrs. Spence, Mr.
Borgen, Mrs. Schurman & Mrs. Juliano



Third Grade



Staff: Mrs. Tiller, Mrs. Smith, Mrs. Burnsworth & Mrs. Beauseigneur

Special Areas and Programming



Staff: Mrs. Liberati, Mrs. Hughes, Mrs. Jankowski, Mrs. Greenblatt & Mrs Czegan.

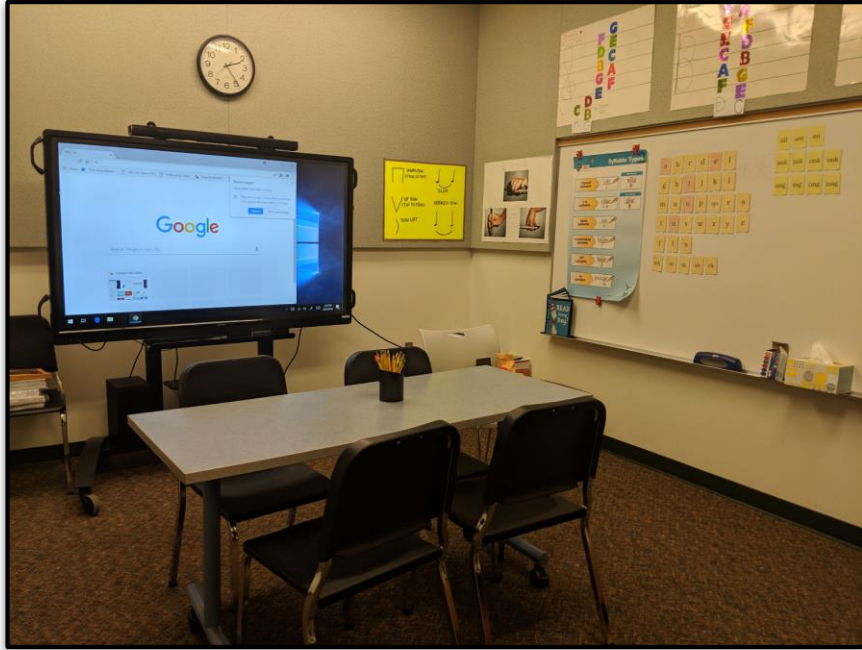


Staff: Mrs. Czegan, Mr. McKinney, Mr. Hugus & Mrs. Scheller

Physical Education and Computer Lab



Reading Support and Special Programs



Cafeteria and Recess



Office and Classroom Staff



Mrs. Welliver & Mrs. Wood



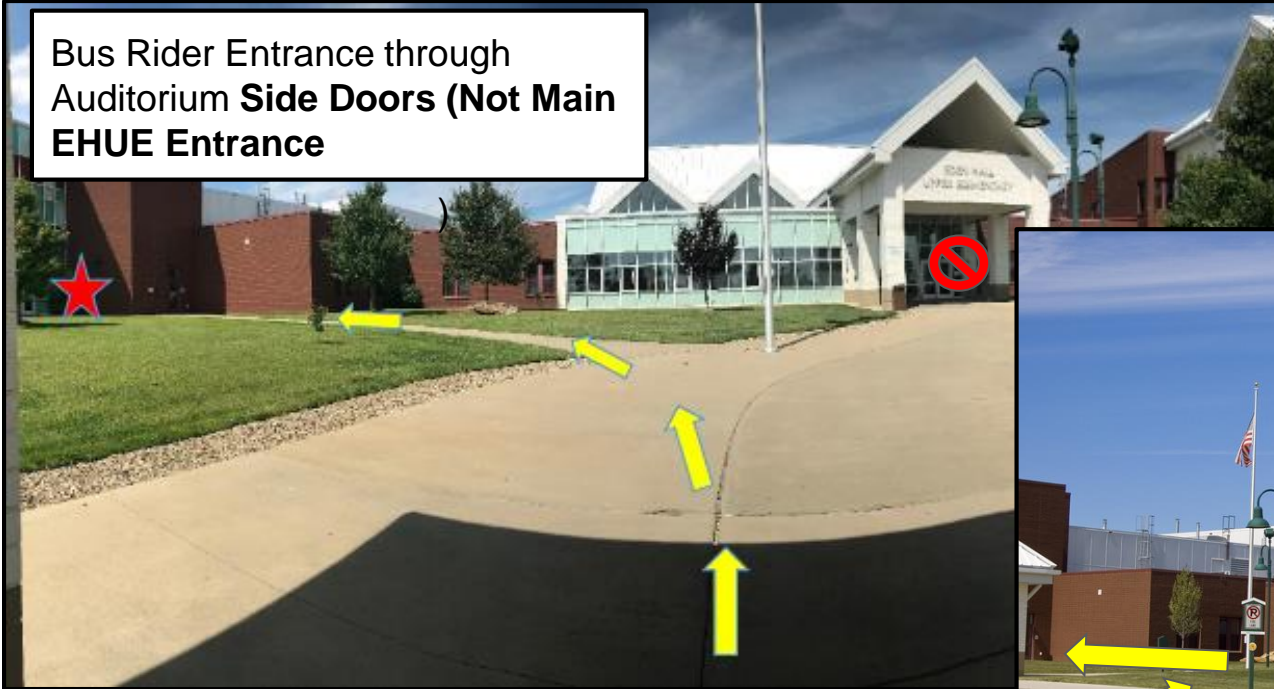
Paraeducators, Classroom Support
& Special Programming Teachers

Operational and Educational Programming

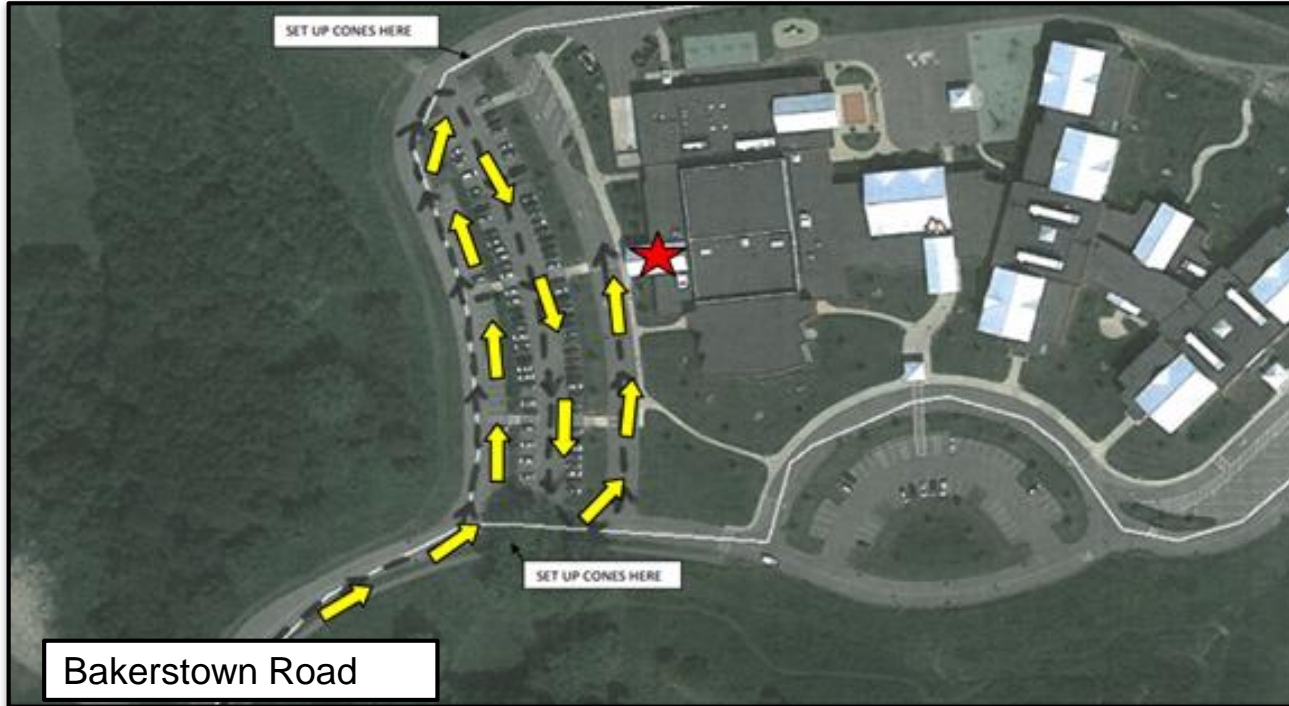
- Furniture
- Class Meeting New Carpet
- Interactive Display Boards
- Chromebook Carts
- Privacy Screens
- Teacher/Reading Chair
- Front Office with Bell/Electronic Buzzer
- Health Office
- Phones Rerouted
- Copy/Print Services
- Security and Traffic
- Student Restrooms
- Extra Tables
- Introductory Procedures and Routines
- English Language Arts
- Mathematics
- Social Studies
- Interventions
- Reading Support
- Special Education
- Gifted Education
- Special Area Rotations (i.e., Physical Education, Art, Computers, Library and Music)
- Related Services will follow regular school start-up timeline (i.e., speech, occupational therapy and physical therapy)

Arrival & Dismissal (Bus Unloading and Loading)

Bus Rider Entrance through
Auditorium **Side Doors (Not Main
EHUE Entrance)**



Parent Drop Off and Pick Up and Kindergarten Drop Off and Pick Up



Front Office





Hance Elementary Building Update

In consultation with multiple outside organizations and after review of U.S. Environmental Protection Agency guidance, the following actions have been completed over the past few days:

- Air conditioning was shut-off.
- Dehumidifiers were placed in all classrooms.
- Each space was partitioned with plastic by PRSD facilities staff for containment prior to the removal of the chilled water line insulation. The insulation was contained, sealed and removed.
- High-Efficiency Particulate Air (HEPA) vacuum cleaners were used on all surfaces and floors. This process was completed multiple times.
- HEPA air scrubbers were also placed in rooms to purify air.
- Surfaces were wiped with a damp detergent solution in each classroom. This process was completed multiple times.

We are finalizing third-party company professional services. IAQ Reports will be posted by Wednesday.

Containment and Removal of Insulation



HEPA Air Scrubber and HEPA Vacuum



Garden Landscaping





Visitation of Hance @ Eden Hall

- Parents may visit Eden Hall from 7:30 - 8:30 p.m. tonight, August 27th.
- When turning into the campus through the main entrance on Warrendale Road, please park in the first section of spaces.
- You will enter via the “S” doors.
- Staff may be working in their classrooms. Please allow them to continue working. They are excited and ready for the first day of school tomorrow.