



Pine-Richland School District

700 Warrendale Road, Gibsonia, PA 15044



PINE-RICHLAND HIGH SCHOOL

700 Warrendale Road
Gibsonia, PA 15044
724.625.4444 Phone
724.625.4640 Fax
www.pinerichland.org

District Enrollment – 4,609

High School Enrollment – 1,567

ACT/CEEB Code – 391512

Accreditation: Middle States Association
of Colleges and Secondary Schools

Administration

Dr. Brian Miller
Superintendent

Dr. Michael Pasquinelli
*Assistant Superintendent for
Secondary Education & Curriculum*

Dr. Kristen Silbaugh
*Assistant Superintendent for
Elementary Education & Curriculum*

Nancy Bowman
Principal

Michael Silbaugh
Assistant Principal

Laura Burns
Assistant Principal

Counseling Staff

David Hoover, ext. 1657
School Counselor (students A-E)
dhoover@pinerichland.org

Jennifer Bowers, ext. 1652
School Counselor (students F-K)
jbowers@pinerichland.org

Toni Filipowski, ext. 1653
School Counselor (students L-Q)
tfilipowski@pinerichland.org

Leslie Straub, ext. 1655
School Counselor (students R-Z)
lstraub@pinerichland.org

Stephanie Skrinjar, ext. 1674
Transition Coordinator
sskrinjar@pinerichland.org

Jean Whalen, ext. 1654
Director of College and Career Counseling
jwhalen@pinerichland.org

PRHS Professional Staff

Grades 9-12.....108
Master's Degree.....49%
Master's Plus 15-45 credits.....13%
Doctorate2%



Our Community

The Pine-Richland School District, located in the north central part of Allegheny County, serves the communities of Pine and Richland townships. Because of its proximity to the City of Pittsburgh, the community has grown tremendously over the last twenty years and continues to prosper. District residents enjoy residential living with easy access to both urban and rural attractions. Pine-Richland is proud of its schools, which serve as the centers of our communities.

Our Mission

Our mission is to **focus on learning for every student every day.**

Our Vision

Learning is our primary purpose.

Learning occurs **inside** and **outside** the classroom.

Learning is measured as BOTH **achievement** AND **growth**.

Learning happens **differently** for **different** people so **flexibility** and **variation** is needed in the approach.

Learning requires **effort** and **persistence**.

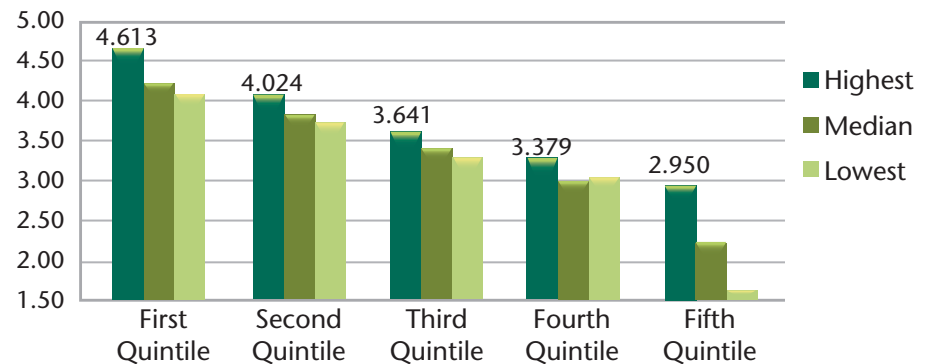
Learning is for all of us and requires the **support** of **everyone** (e.g., student, staff, and parents).

Class of 2017 Post-Secondary Plans – 356 Students

College/University Programs	90%	Technical/Career Education.....	4%
• 83% matriculated to a 4 year college or university		Undecided	5%
• 7% matriculated to a 2 year college		Military	1%

Class of 2018 Cumulative GPA

Cumulative Quality Point Average (361 students ranked • 6 semesters)



Highest GPA in Class of 2018..... 4.613

Explanation of Transcript

School Calendar: PRHS's year consists of four quarters, each nine weeks in duration. Classes meet for either 18 weeks (1 semester) or 36 weeks (2 semesters), 5 days a week, 42 minutes per day.

Course Placement: Placement in each subject is guided by student achievement and teacher recommendation.

Grade Point Average: Student grade point averages are calculated by assigning a weight to each numerical grade on all courses carrying credit. An additional 0.5 is assigned for Honors courses and an additional 1.0 is assigned for Advanced Placement and CHS courses. To calculate GPA, the sum of the weights of each grade is divided by number of credits attempted.

Grading Scale: A = 90-100%, B = 80-89%, C = 70-79%, D = 60-69%, F = <60%, Passing Grade = D.

Class Rank: Reporting of class rank is by request.

2017 PRHS SAT participation: 85%	SAT Mean Scores	Evidence-Based Reading and Writing				Math
	Pine-Richland	591				594
	Pennsylvania	540				533
	National	538				538
2017 PRHS ACT participation: 57%	ACT Average	English	Math	Reading	Science	Composite
	Pine-Richland	25.0	25.6	25.0	24.8	25.2
	Pennsylvania	23.4	23.4	24.2	23.3	23.7
	National	20.3	20.7	21.4	21.0	21.0
National Merit Scholars	Class of 2017: 3 National Merit Finalists, 12 Letters of Commendation					
College in High School	We collaborate with local colleges to provide the following courses at Pine-Richland High School: Business Calculus, Calculus AB, Calculus BC, Statistics, French, Spanish, Physics, Communications: Argument and Rhetoric, Visual Basic Programming.					
Advanced Placement All students enrolled in Advanced Placement courses are required to take the Advanced Placement Exam.	In May 2017, 991 Advanced Placements tests were taken in 25 subject areas. Students earned scores of 5 on 143 tests, 4 on 242 tests and 3 on 319 tests.					
	AP courses offered at PRHS include:					
	• American Government & Politics	• English Language & Composition	• Psychology			
	• Art History	• English Literature & Composition	• Spanish Language			
	• Biology	• European History	• Statistics			
	• Calculus AB	• French Language	• Studio Art			
	• Calculus BC	• German Language	• U.S. History			
	• Chemistry	• Microeconomics				
Graduation Credit Requirements for the Class of 2018 24 Credits	Credits	Subject	Credits	Subject		
	4	English	1	Health/Physical Education		
	3	Social Studies	1	Core Flexible Academic (Math, Science, or Social Studies)		
	3	Science	9	Electives		
	3	Mathematics				
Extra-Curricular Activities	The following is a partial list of student activities at PRHS. The Marching Band currently meets as a co-curricular class earning credit.					
	Audio/Visual - PRTV	Forensics	Key Club	Technology Student Association		
	Best Buddies	Future Business Leaders	Model United Nations	Tri-Rivers Fencing Club		
	Foreign Exchange Program	of America	National Honor Society	Student Government		
		Inkwell (Literary Magazine)				
Student Recognition in the Arts at PRHS	PRHS earned about 100 Scholastic Regional Art & Writing Awards with five students earning national medals in 2017. The National Association for Music Education selected two students to participate in the All-East Orchestra.					
	In addition, the Pennsylvania Music Educators Association (PMEA) selected several PR students to participate in prestigious orchestras and choirs. Most notably, the PRHS Chamber Singers were selected to sing at the state conference and one student was selected for the PMEA All-State Band program.					
Interscholastic Athletics	Baseball	Cross-Country	Gymnastics	Soccer	Track & Field	
	Basketball	Field Hockey	Ice Hockey	Softball	Volleyball	
	Cheerleading	Football	In-Line Hockey	Swimming/Diving	Wrestling	
	Crew	Golf	Lacrosse	Tennis		
State & National Recognition	US News & World Report ranked Pine-Richland High School first in Allegheny County and seventh in the state in its "2017 Top High School" rankings. The Washington Post ranked Pine-Richland High School second in the region and number 13 statewide in its "Most Challenging High School" rankings for 2017. The Pittsburgh Business Times ranked Pine-Richland eighth out of 105 districts in the region in 2017.					