

Pine-Richland School District

700 Warrendale Road, Gibsonia, PA 15044



PINE-RICHLAND HIGH SCHOOL

700 Warrendale Road
Gibsonia, PA 15044
724.625.4444 Phone
724.625.4640 Fax
www.pinerichland.org

District Enrollment – 4,599
High School Enrollment – 1,552
ACT/CEEB Code – 391512
Accreditation: Middle States Association
of Colleges and Secondary Schools

Administration

- Dr. Brian Miller
Superintendent
- Dr. Michael Pasquinelli
*Assistant Superintendent for
Secondary Education & Curriculum*
- Dr. Kristen Silbaugh
*Assistant Superintendent for
Elementary Education & Curriculum*
- Nancy Bowman
Principal
- Robert Puskas
Assistant Principal
- Stephanie Svilar
Assistant Principal

Counseling Staff

- Jasmine Holliday, ext. 1657
School Counselor (students A-E)
jholliday@pinerichland.org
- Jennifer Bowers, ext. 1652
School Counselor (students F-K)
jbowers@pinerichland.org
- Toni Filipowski, ext. 1653
School Counselor (students L-Q)
tfilipowski@pinerichland.org
- Leslie Straub, ext. 1655
School Counselor (students R-Z)
lstraub@pinerichland.org
- Shawn McCartan, ext. 1674
Transition Coordinator
smccartan@pinerichland.org
- Jean Whalen, ext. 1654
Director of College and Career Counseling
jwhalen@pinerichland.org

PRHS Professional Staff

- Grades 9-12.....108
- Master's Degree.....49%
- Master's Plus 15-45 credits.....13%
- Doctorate2%



Our Community

The Pine-Richland School District, located in the north central part of Allegheny County, serves the communities of Pine and Richland townships. Because of its proximity to the City of Pittsburgh, the community has grown tremendously over the last twenty years and continues to prosper. District residents enjoy residential living with easy access to both urban and rural attractions. Pine-Richland is proud of its schools, which serve as the centers of our communities.

Our Mission

Our mission is to **focus on learning for every student every day.**

Our Vision

Learning is our primary purpose.

Learning occurs **inside** and **outside** the classroom.

Learning is measured as BOTH **achievement AND growth.**

Learning happens **differently** for **different** people so **flexibility** and **variation** is needed in the approach.

Learning requires **effort** and **persistence.**

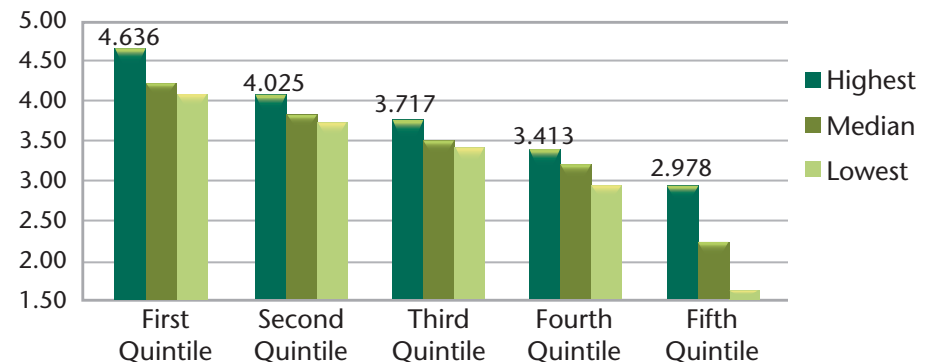
Learning is for all of us and requires the **support** of **everyone** (e.g., student, staff, and parents).

Class of 2018 Post-Secondary Plans – 355 Students

- College/University Programs 92%
- Technical/Career Education.....5%
- Undecided2%
- Military1%
- 84% matriculated to a 4 year college or university
- 8% matriculated to a 2 year college

Class of 2019 Cumulative GPA

Cumulative Quality Point Average (410 students ranked • 6 semesters)



Highest GPA in Class of 2019..... 4.636

Explanation of Transcript

School Calendar: PRHS's year consists of four quarters, each nine weeks in duration. Classes meet for either 18 weeks (1 semester) or 36 weeks (2 semesters), 5 days a week, 42 minutes per day.

Course Placement: Placement in each subject is guided by student achievement and teacher recommendation.

Grade Point Average: Student grade point averages are calculated by assigning a weight to each numerical grade on all courses carrying credit. An additional 0.5 is assigned for Honors courses and an additional 1.0 is assigned for Advanced Placement and CHS courses. To calculate GPA, the sum of the weights of each grade is divided by number of credits attempted.

Grading Scale: A = 90-100%, B = 80-89%, C = 70-79%, D = 60-69%, F = <60%, Passing Grade = D.

Class Rank: Reporting of class rank is by request.

2018 PRHS SAT participation: 89%	SAT Mean Scores Pine-Richland Pennsylvania National		Evidence-Based Reading and Writing 592 547 536			Math 602 539 531												
2018 PRHS ACT participation: 49%	ACT Average Pine-Richland Pennsylvania National	English 25.0 23.3 20.2	Math 25.1 23.2 20.5	Reading 25.1 24.0 21.3	Science 25.0 23.1 20.7	Composite 25.2 23.5 20.8												
National Merit Scholars	Class of 2018: 5 National Merit Finalists, 7 Letters of Commendation																	
College in High School	We collaborate with local colleges to provide the following courses at Pine-Richland High School: Business Calculus, Statistics, French, Spanish, Physics, Communications: Argument and Rhetoric, Java Programming, Advanced Computer Science.																	
Advanced Placement All students enrolled in Advanced Placement courses are required to take the Advanced Placement Exam.	In May 2018, 1,023 Advanced Placements tests were taken in 23 subject areas. Students earned scores of 5 on 161 tests, 4 on 239 tests and 3 on 338 tests. AP courses offered at PRHS include: <ul style="list-style-type: none"> • American Government & Politics • Art History • Biology • Calculus AB • Calculus BC • Chemistry • English Language & Composition • English Literature & Composition • European History • French Language • German Language • Microeconomics • Physics C • Psychology • Spanish Language • Statistics • Studio Art • U.S. History 																	
Graduation Credit Requirements for the Class of 2019 24 Credits	Credits 4 3 3 3	Subject English Social Studies Science Mathematics	Credits 1 1 9	Subject Health/Physical Education Core Flexible Academic (Math, Science, or Social Studies) Electives														
Extra-Curricular Activities	The following is a partial list of student activities at PRHS. The Marching Band currently meets as a co-curricular class earning credit. <table border="0" style="width: 100%; border-collapse: collapse;"> <tr> <td style="width: 25%;">Audio/Visual - PRTV</td> <td style="width: 25%;">Forensics</td> <td style="width: 25%;">Key Club</td> <td style="width: 25%;">Technology Student Association</td> </tr> <tr> <td>Best Buddies</td> <td>Future Business Leaders of America</td> <td>Model United Nations</td> <td>Tri-Rivers Fencing Club</td> </tr> <tr> <td>Foreign Exchange Program</td> <td>Inkwell (Literary Magazine)</td> <td>National Honor Society</td> <td>Student Government</td> </tr> </table>						Audio/Visual - PRTV	Forensics	Key Club	Technology Student Association	Best Buddies	Future Business Leaders of America	Model United Nations	Tri-Rivers Fencing Club	Foreign Exchange Program	Inkwell (Literary Magazine)	National Honor Society	Student Government
Audio/Visual - PRTV	Forensics	Key Club	Technology Student Association															
Best Buddies	Future Business Leaders of America	Model United Nations	Tri-Rivers Fencing Club															
Foreign Exchange Program	Inkwell (Literary Magazine)	National Honor Society	Student Government															
Student Recognition in the Arts at PRHS	PRHS students earned more than five dozen Scholastic Regional Art & Writing awards with eight awards qualifying for the national competition. PRHS was represented at the National Association for Music Education All-National Honors Ensemble and at the Pennsylvania Music Educator Association (PMEA) All-State Orchestra, All-State Band, and All-State Choir. In addition, a student was selected to participate in the PMEA Future Music Educators Honors Symposium.																	
Interscholastic Athletics	Baseball Basketball Cheerleading Crew	Cross-Country Field Hockey Football Golf	Gymnastics Ice Hockey In-Line Hockey Lacrosse	Soccer Softball Swimming/Diving Tennis	Track & Field Volleyball Wrestling													
State & National Recognition	PRHS students earned the grand champion title at the National Robotics League BattleBot Championships. Two students earned gold medals at the SkillsUSA National Championships, and two earned silver medals at the Family, Career & Community Leaders of America National Competition through A.W. Beattie Career Center. Nine students participated in the PA Future Business Leaders of America competition and one competed nationally. The PRHS World Languages Department earned the 2018-2019 Globe Award through the Pennsylvania State Modern Language Association. U.S. News & World Report ranked PRHS second in Allegheny County and eleventh in the state in its "2018 Top High School" rankings. The Pittsburgh Business Times ranked Pine-Richland eighth out of 105 districts in the region in 2018.																	