



Pine-Richland School District

700 Warrendale Road, Gibsonia, PA 15044



PINE-RICHLAND HIGH SCHOOL

700 Warrendale Road
Gibsonia, PA 15044
724.625.4444 Phone
724.625.4640 Fax
www.pinerichland.org

District Enrollment – 4,562
High School Enrollment – 1,481
ACT/CEEB Code – 391512
Accreditation: Middle States Association
of Colleges and Secondary Schools

Administration

- Dr. Brian Miller
Superintendent
- Dr. Michael Pasquinelli
*Assistant Superintendent for
Secondary Education & Curriculum*
- Dr. Kristen Silbaugh
*Assistant Superintendent for
Elementary Education & Curriculum*
- Nancy Bowman
Principal
- Robert Puskas
Assistant Principal
- Thomas Salopek
Assistant Principal
- Stephanie Svilar
Assistant Principal

Counseling Staff

- Jasmine Holliday, ext. 1657
School Counselor (students A-E)
jholliday@pinerichland.org
- Jennifer Bowers, ext. 1652
School Counselor (students F-K)
jbowers@pinerichland.org
- Toni Filipowski, ext. 1653
School Counselor (students L-Q)
tfilipowski@pinerichland.org
- Leslie Straub, ext. 1655
School Counselor (students R-Z)
lstraub@pinerichland.org
- Jocelyn Secen, ext. 1674
Transition Coordinator
jsecen@pinerichland.org
- Jean Whalen, ext. 1654
Director of College and Career Counseling
jwhalen@pinerichland.org

PRHS Professional Staff

- Grades 9-12..... 108
- Master's Degree.....49%
- Master's Plus 15-45 credits.....13%
- Doctorate2%



Our Community

The Pine-Richland School District, located in the north central part of Allegheny County, serves the communities of Pine and Richland townships. Because of its proximity to the City of Pittsburgh, the community has grown tremendously over the last twenty years and continues to prosper. District residents enjoy residential living with easy access to both urban and rural attractions. Pine-Richland is proud of its schools, which serve as the centers of our communities.

Our Mission

Our mission is to **focus on learning for every student every day.**

Our Vision

Learning is our primary purpose.

Learning occurs **inside** and **outside** the classroom.

Learning is measured as BOTH **achievement AND growth.**

Learning happens **differently** for **different** people so **flexibility** and **variation** is needed in the approach.

Learning requires **effort** and **persistence.**

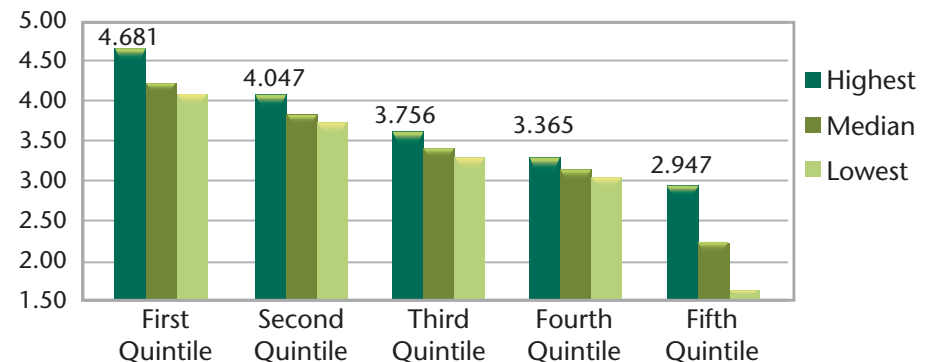
Learning is for all of us and requires the **support** of **everyone** (e.g., student, staff, and parents).

Class of 2019 Post-Secondary Plans – 397 Students

- College/University Programs89%
- Technical/Career Education4%
- Employed/Undecided6%
- Military1%
- 81% matriculated to a 4 year college or university
- 8% matriculated to a 2 year college

Class of 2020 Cumulative GPA

Cumulative Quality Point Average (348 students ranked • 6 semesters)



Highest GPA in Class of 2020..... 4.681

Explanation of Transcript

School Calendar: PRHS's year consists of four quarters, each nine weeks in duration. Classes meet for either 18 weeks (1 semester) or 36 weeks (2 semesters), 5 days a week, 42 minutes per day.

Course Placement: Placement in each subject is guided by student achievement and teacher recommendation.

Grade Point Average: Student grade point averages are calculated by assigning a weight to each numerical grade on all courses carrying credit. An additional 0.5 is assigned for Honors courses and an additional 1.0 is assigned for Advanced Placement and CHS courses. To calculate GPA, the sum of the weights of each grade is divided by number of credits attempted.

Grading Scale: A = 90-100%, B = 80-89%, C = 70-79%, D = 60-69%, F = <60%, Passing Grade = D.

Class Rank: Reporting of class rank is by request.

2019 PRHS SAT participation: 90%	SAT Mean Scores		Evidence-Based Reading and Writing			Math	
	Pine-Richland		595			606	
	Pennsylvania		545			537	
	National		531			528	
2019 PRHS ACT participation: 42%	ACT Average		English	Math	Reading	Science	Composite
	Pine-Richland		25.3	25.7	25.4	25.0	25.5
	Pennsylvania		23.3	23.1	24.1	23.2	23.6
	National		20.1	20.4	21.2	20.6	20.7
National Merit Scholars	Class of 2019: 2 National Merit Finalists, 12 Letters of Commendation						
College in High School	We collaborate with local colleges to provide the following courses at Pine-Richland High School: Business Calculus, Statistics, Physics, Communications: Argument and Rhetoric, and Advanced Computer Science.						
Advanced Placement All students enrolled in Advanced Placement courses are required to take the Advanced Placement Exam.	In May 2019, 1,030 Advanced Placement tests were taken in 24 subject areas. Students earned scores of 5 on 149 tests, 4 on 270 tests and 3 on 331 tests.						
	AP courses offered at PRHS include: <ul style="list-style-type: none"> • American Government & Politics • Art History • Biology • Calculus AB • Calculus BC • Chemistry • Computer Science A • English Language & Composition • English Literature & Composition • Environmental Science • European History • French Language • German Language • Microeconomics • Physics C • Psychology • Spanish Language • Statistics • Studio Art • U.S. History 						
Graduation Credit Requirements for the Class of 2020 24 Credits	Credits	Subject	Credits	Subject			
	4	English	1	Health/Physical Education			
	3	Social Studies	1	Core Flexible Academic (Math, Science, or Social Studies)			
	3	Science	9	Electives			
	3	Mathematics					
Extra-Curricular Activities	The following is a partial list of student activities at PRHS. The Marching Band currently meets as a co-curricular class earning credit.						
	Audio/Visual - PRTV	Forensics		Key Club	Student Government		
	Best Buddies	Future Business Leaders		Model United Nations	Technology Student Association		
	Foreign Exchange Program	of America	Inkwell (Literary Magazine)	National Honor Society	Tri-Rivers Fencing Club		
Student Recognition in the Arts at PRHS	Several PRHS students earned Scholastic Regional Art awards and two students qualified for the national competition. PRHS was represented at the National High School Musical Theater Awards Program, at the Pennsylvania Music Educators All-State Choral Program, and at numerous PMEA regional orchestra, band, and choral programs.						
	Interscholastic Athletics	Baseball	Cross-Country	Gymnastics	Soccer	Track & Field	
	Basketball	Field Hockey	Ice Hockey	Softball	Volleyball		
	Cheerleading	Football	In-Line Hockey	Swimming/Diving	Wrestling		
	Crew	Golf	Lacrosse	Tennis			
State & National Recognition	US News & World Report ranked PRHS seventh in Allegheny County and 21st in the state in its "Top High School" rankings for 2019. In addition, the report ranks PRHS 794 out of 17,245 public schools across the U.S. <i>The Pittsburgh Business Times</i> ranked Pine-Richland School District eighth out of 105 districts in the region in its 2019 list. PRHS placed second out of 58 colleges and high schools in the national Bots IQ competition. Two PRHS students earned first-place awards at the Technology Student Association Regional Competition. Students placed in the top three at the SkillsUSA PA competition and one qualified for the national level. Six PRHS students earned awards at the Pennsylvania Future Business Leaders of America State Competition with four dozen qualifying for the state competition. PRHS students helped the A.W. Beattie Career Center team earn first-place in the World of Wheels Peddle Car Challenge.						